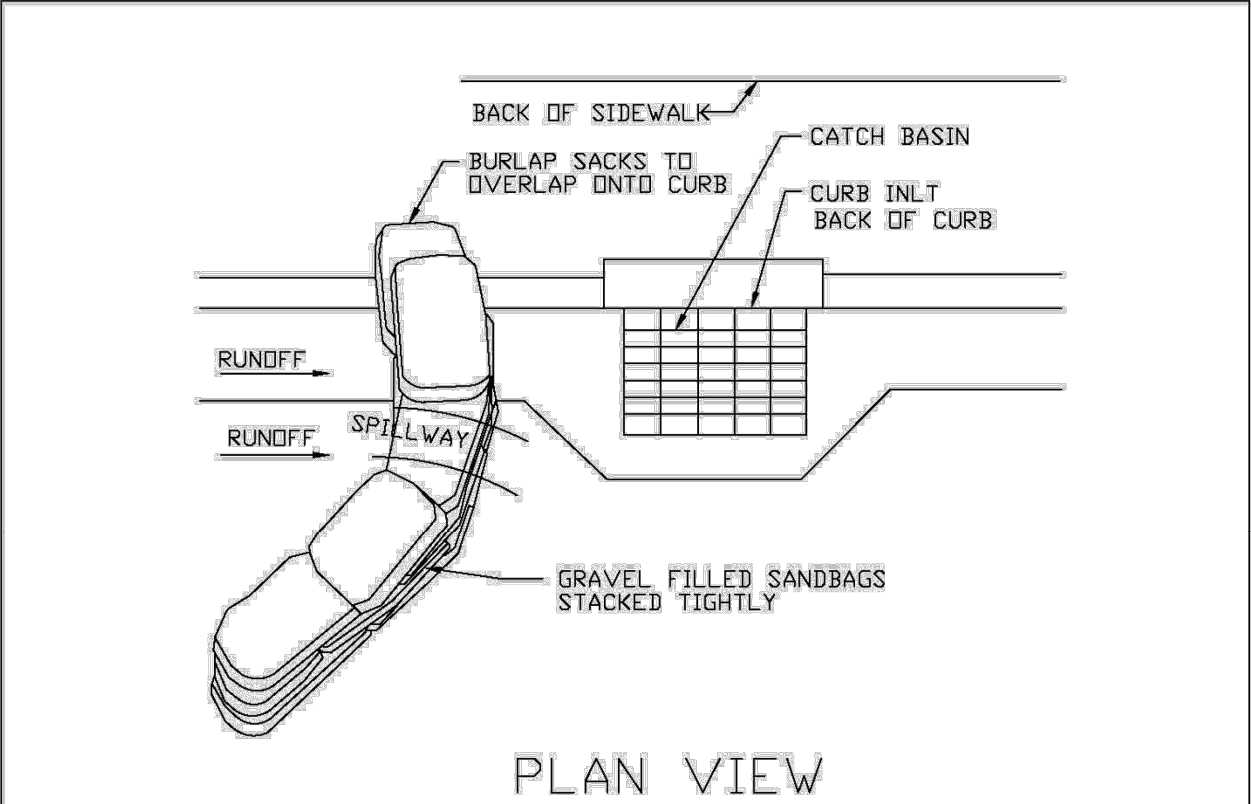


- NOTES:
1. PLACE CURB TYPE SEDIMENT BARRIERS ON GENTLY SLOPING STREET SEGMENTS, WHERE WATER CAN POND AND ALLOW SEDIMENT TO SEPARATE FROM RUNOFF.
  2. SANDBAGS, OF EITHER BURLAP OR WOVEN GEOTEXTILE FABRIC, ARE FILLED WITH GRAVEL, LAYERED AND PACKED TIGHTLY.
  3. LEAVE ONE SANDBAG GAP IN THE TOP ROW TO PROVIDE A SPILLWAY FOR OVERFLOW.
  4. INSPECT BARRIERS AND REMOVED SEDIMENT AFTER EACH STORM EVENT. SEDIMENT AND GRAVEL MUST BE REMOVED FROM THE TRAVELED WAY IMMEDIATELY.

**CURB INLET SEDIMENT BARRIER**

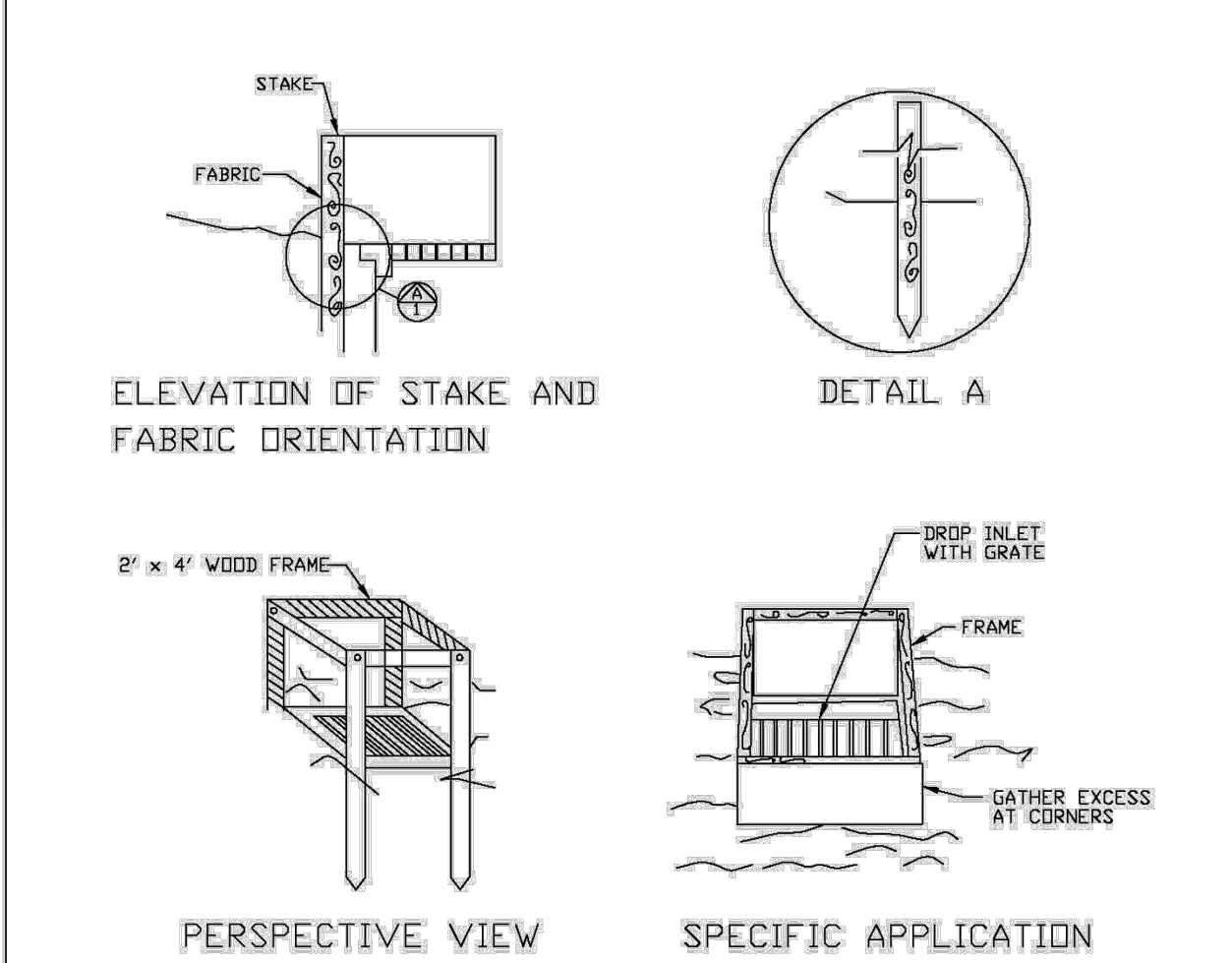
ENGINEERING STANDARDS 2025				
REVISIONS		ENGINEERING DIVISION CITY OF POMPAÑO BEACH	CURB INLET SEDIMENT BARRIER	
BY	DATE			
			DATE: MAY 2022 DWG. NO. 507-1	
			SCALE: N.T.S.	



- NOTES:
1. PLACE CURB TYPE SEDIMENT BARRIERS ON GENTLY SLOPING STREET SEGMENTS, WHERE WATER CAN POND AND ALLOW SEDIMENT TO SEPARATE FROM RUNOFF.
  2. SANDBAGS, OF EITHER BURLAP OR WOVEN GEOTEXTILE FABRIC ARE FILLED WITH GRAVEL, LAYERED AND PACKED TIGHTLY.
  3. LEAVE A ONE SANDBAG GAP IN THE TOP ROW TO PROVIDE A SPILLWAY FOR OVERFLOW.
  4. INSPECT BARRIERS AND REMOVED SEDIMENT AFTER EACH STORM EVENT. SEDIMENT AND GRAVEL MUST BE REMOVED FROM THE TRAVELED WAY IMMEDIATELY.

**CURB AND GUTTER SEDIMENT BARRIER**

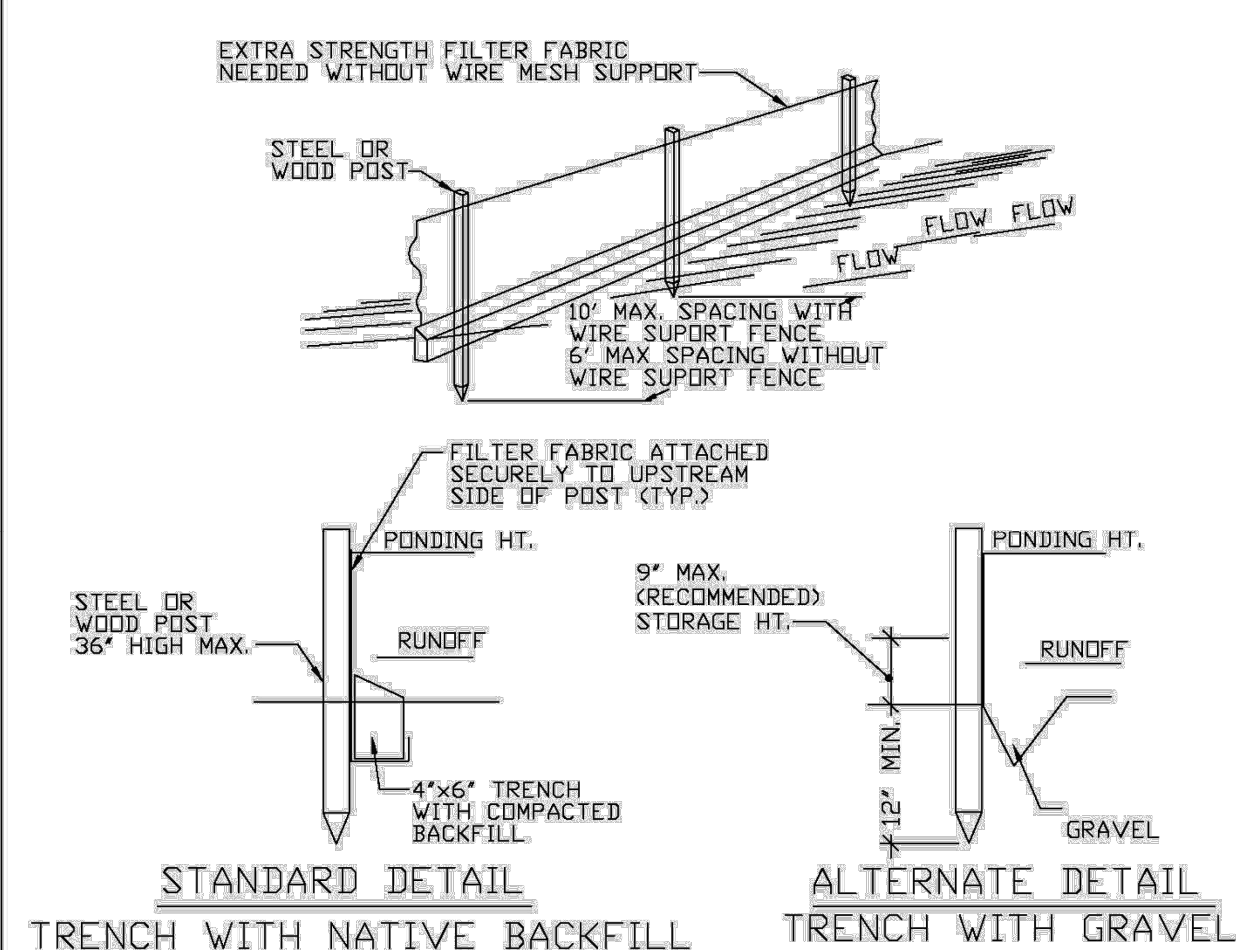
ENGINEERING STANDARDS 2025				
REVISIONS		ENGINEERING DIVISION CITY OF POMPAÑO BEACH	CURB AND GUTTER SEDIMENT BARRIER	
BY	DATE			
			DATE: MAY 2022 DWG. NO. 507-2	
			SCALE: N.T.S.	



THIS METHOD OF INLET PROTECTION IS APPLICABLE WHERE THE INLET DRAINS A RELATIVELY FLAT AREA (SLOPE NO GREATER THAN 5%) WHERE THE INLET SHEET OR OVERLAND FLOWS (NOT EXCEEDING 1 C.F.S.) ARE TYPICAL. THE METHOD SHALL NOT APPLY TO INLETS RECEIVING CONCENTRATED FLOWS, SUCH AS IN STREET OR HIGHWAY MEDIANS

**FILTER FABRIC  
DROP INLET SEDIMENT FILTER**

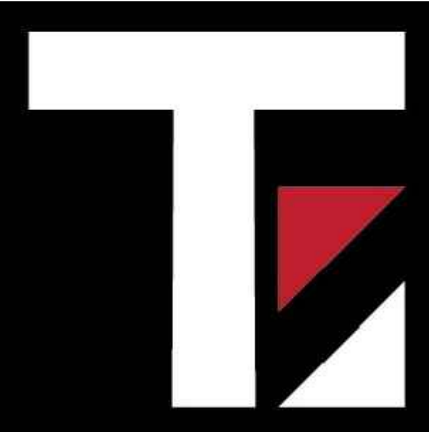
ENGINEERING STANDARDS 2025				
REVISIONS		ENGINEERING DIVISION CITY OF POMPAÑO BEACH	FILTER FABRIC DROP INLET SEDIMENT FILTER	
BY	DATE			
			DATE: MAY 2022 DWG. NO. 508-1	
			SCALE: N.T.S.	



**SILT FENCE  
EROSION CONTROL GENERAL NOTES**

1. SILT FENCE AND TURBIDITY BARRIERS MUST REMAIN IN PLACE AND BE MAINTAINED AT ALL LOCATIONS SHOWN IN THE DRAWINGS UNTIL CONSTRUCTION IS COMPLETED AND SOILS ARE STABILIZED AND VEGETATION HAS BEEN.
2. CPMTRACTOR SHALL SUBMIT SCHEDULE FOR THE INSTALLATION, INSPECTION AND MAINTENANCE THE EROSION CONTROLS FEATURES AS SHOWN IN THE DRAWINGS OR AS DIRECTED BY THE DESIGN ENGINEER. THE SCHEDULE SHALL SPECIFICALLY SHALL SPECIFICALLY INDICATE THE SEQUENCE OF CLEARING, EARTH WORK OPERATIONS, AND WHEN THE EROSION CONTROL FEATURE WILL BE INSTALLED, INSPECTED, AND MAINTAINED. IT SHALL ALSO INCLUDE METHODS TO PREVENT POLLUTION OF STREAM, LAKES, TIDAL WATERS, CANALS, AND IMPOUNDMENTS. ESTABLISHED.

ENGINEERING STANDARDS 2025				
REVISIONS		ENGINEERING DIVISION CITY OF POMPAÑO BEACH	SILT FENCE	
BY	DATE			
			DATE: MAY 2022 DWG. NO. 509-1	
			SCALE: N.T.S.	



Thompson Engineering  
& Consulting, Inc.  
19304 NW 12th Street  
Pembroke Pines, FL 33029  
Florida Registry No. 33359  
thompson-ec.com  
(954) 232-2281

Date: 12/03/2025

This item has been digitally signed and sealed by Justin Thompson, PE, on the date adjacent to the seal.

Printed copies of this document are not considered signed and sealed and the signature must be verified on any electronic copies.

DRC SUBMITTAL  
RISING TIDE  
CAR WASH  
2901 W. ATLANTIC BOULEVARD  
POMPAÑO BEACH, FL 33069  
CITY OF POMPAÑO BEACH BROWARD COUNTY

Project No.	25-032
Date	12/03/2025
Scale	As Shown
Drawn By	UCS
Checked By	JT

Revisions		
No.	Description	Date

STORM WATER  
POLLUTION &  
PROTECTION  
NOTES & DETAILS

Sheet Number:  
**C107**  
Sheet 7 of 19

AAC

PZ25-12000026  
01/06/2026